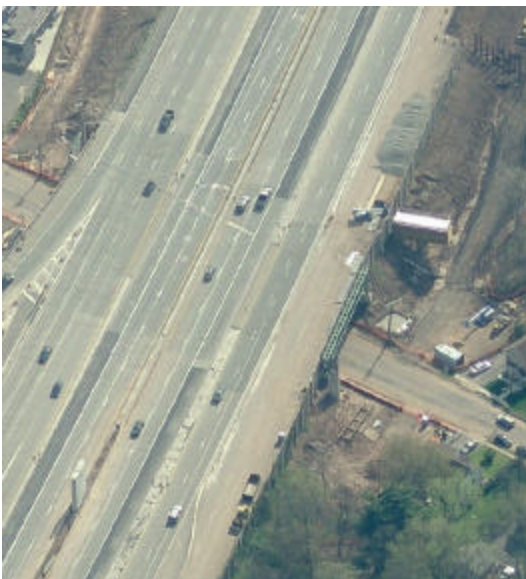


Garden State Parkway Interchange 142 Union, Hillside, and Irvington, NJ



GTS Consultants provided survey control for aerial topographic mapping and primary control for the construction baseline for improvements to Interchange 142 connecting the Garden State Parkway with Route I-78. The interchange was originally constructed in the 1970's without direct connections from GSP northbound to I-78 westbound and from GSP southbound to I-78 eastbound. In addition, GTS provided several areas of detailed topographic survey to support the design of bridge and ramp widenings, drainage structures, and noise walls.



The new ramp from GSP northbound to I-78 westbound (shown above) was completed and opened to traffic in September 2009. The new ramp from GSP southbound to I-78 eastbound (shown at left) is under construction and is scheduled to open in late 2010.

Construction of the 'missing moves' will have a significant positive impact on local streets by keeping highway traffic on the highways. A minimal amount of property taking was required for this project.